

Mid-West[®] Instrument

O.E.M “Diaphragm Type” Differential Pressure Gauges & Switches Model 522



RANGE: 0-5 P.S.I.D. TO 0- 50 P.S.I.D. (.3 bar to 3.4 bar)



Gauge Features:

- Safe Working Pressure: 1000 PSIG (69 bar).
- Aluminum or 316 / 316L SS Gauge Body.
- Wetted Parts: 316 SS, Ceramic, & Acetal components
- Seal & Diaphragm Material: Buna-N or Viton
- 1/4" FNPT Process Connections (End Connected)
- Weather-resistant construction standard.
- Dial Accuracy $\pm 5\%$ standard.
- Switch Only (No Dial) available
- Dial: 0.80" weatherproof multicolored
- 2-1/2" Optional Dial Size

Switch Options:

- Switches are optional.
- Hermetically Sealed Switch Outputs of 60W, 3 Amp for SPST and 3W, 0.25 Amp for SPDT electrical specification.
- SPST Switch Adjustable from 40% - 95% of Range *
Up to 240 VAC/VDC voltage rating.
- SPDT Switch Adjustable from 20% - 70% of Range *
Up to 125 VAC/VDC voltage rating.
- Available with Flat Pack case with Jacketed Flying Leads or with DIN IP65 / NEMA 4X Plug-in Connector.
- Optional Switch Set Feedback Decal
- Switch Location Top or Bottom
- CE Marking for the Low Voltage Directive and ROHS Compliance available upon request.

* Dependent on selected switch option.



Operation: Differential pressure is sensed by flexible elastomer diaphragm and a calibrated spring. A magnetic coupling transmits the sensing element motion to an indicating pointer. This prohibits the possibility of fluid leaking into the gauge case, while assuring total isolation of the process fluid within the pressure capsule. The diaphragm assures total separation between high and low pressure signals. It is totally supported at full travel in either direction.

Temperature Limits: -40 °F (-40° C) to 200°F (93°C). These limits are based on the entire instrument being saturated to these temperatures. System (process) temperatures may exceed these limitations with proper installation. Contact our customer service representative for details.

Standards: All Model 522 Series differential pressure gauges either conform to and/or are designed to the requirements of the following standards: ASME B1.20.1 NACE MR0175, ASME B40.100 NEMA Std. 250, EN-61010-1 UL Std. No. 50 & 508, CSA-C22.2 No. 14

Factory Preset of switches available at no charge (Specify switch setting on the order)

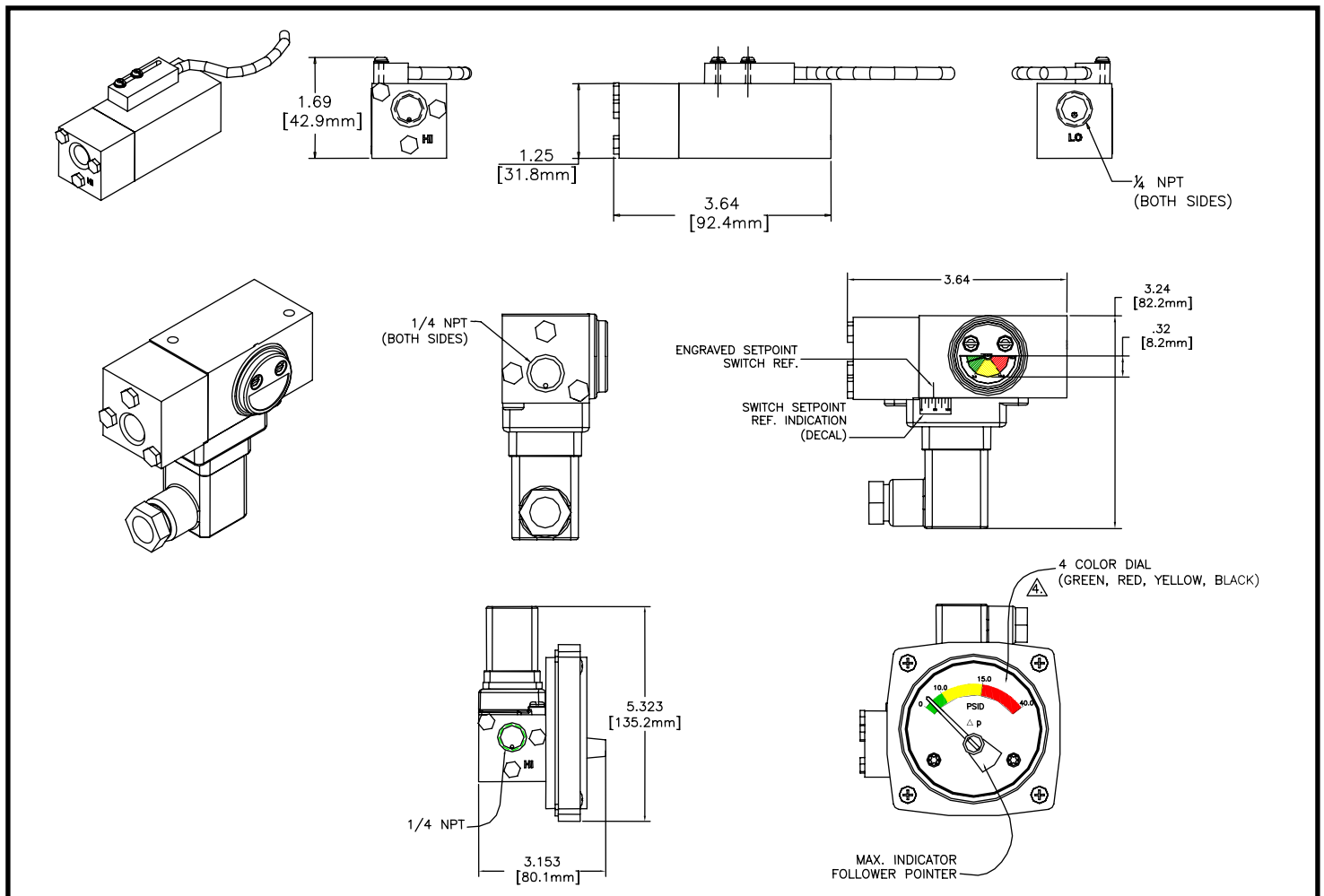
The use of diaphragm seals is not recommended.

Attempts to install such seals on this gauge will void the warranty

Ordering Information:

Contact factory for desired configuration options & pricing.

Dimensional:



TEMPERATURE LIMITS: -40 °F (-40° C) to 200°F (93°C). These limits are based on the entire instrument being saturated to these temperatures. System (process) temperatures may exceed these limitations with proper installation. Contact our customer service representative for details.

STANDARDS: All Model 522 Series differential pressure gauges either conform to and/or are designed to the requirements of the following standards:

ASME B1.20.1	NACE MR0175
ASME B40.100	NEMA Std. 250
EN-61010-1	UL Std. No. 50 & 508
CSA-C22.2 No. 14	

Factory Preset of switches available at no charge (Specify Setting on the order)

The use of diaphragm seals is not recommended. Attempts to install such seals on this gauge will void the warranty

Mid-West[®] Instrument

6500 Dobry Dr. Sterling Heights, MI 48314

Ph: (586)254-6500 FAX (586)254-6509

Toll Free: (800)648-5778

E-Mail: sales@midwestinstrument.com

Web Page: www.midwestinstrument.com

